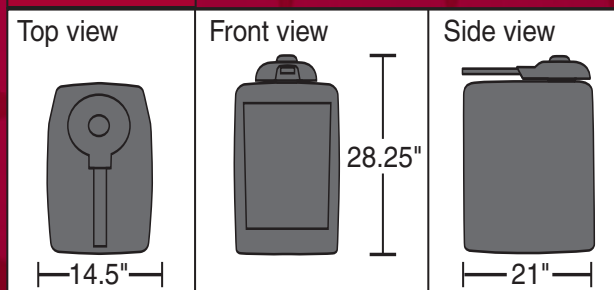


**ROBOSWING™**  
RESIDENTIAL SWING  
GATE OPERATOR

**Dimensions**



**Mechanical Specifications**

<b>MOTOR</b>	12V DC, 7-amp battery
<b>CYCLES</b>	Capable of 250 cycles per day with plug-in transformer. Cycles with solar power varies. Contact manufacturer.
<b>CAPABILITIES</b>	Maximum gate length 16'. Maximum gate weight 400 lbs.
<b>GATE TRAVELING SPEED</b>	90° opening in 15-17 seconds.
<b>SHIPPING WEIGHT</b>	175 lbs.
<b>POWER FAILURE</b>	The unit is equipped with a battery backup system (50 cycles)
<b>COVER</b>	Heavy-duty polyethylene plastic cover and stainless steel access door.
<b>CHASSIS</b>	Constructed with 1/4" metal that is welded and gold zinc-plated.

**Electrical Specifications**

<b>GEAR BOX</b>	Equipped with two gear reducers that are lubricated in an oil bath.
<b>SOLAR PANEL</b>	The optional solar panel allows the RoboSwing™ to operate in remote locations.
<b>ALARM</b>	Activates anytime the moving gate is physically stopped by an obstruction.
<b>TIMER</b>	Can be set from 0-60 seconds.
<b>SENSOR</b>	Can be set for closing and opening cycles. If the gate hits a vehicle while closing, it reverses. If it hits a vehicle while opening, it stops, reverses several inches, and stops again.

**3-Year Warranty**



**CHAMBERLAIN®**  
**ELITE™**

THE CHAMBERLAIN GROUP, INC.  
845 Larch Avenue • Elmhurst, IL 60126

[www.chamberlain.com](http://www.chamberlain.com)

©2004 The Chamberlain Group, Inc.  
Printed in U.S.A., 12/04

ELGBRRW9

**ROBOSWING™**  
RESIDENTIAL SWING  
GATE OPERATOR

**CHAMBERLAIN®**  
**ELITE™**



THE INTELLIGENT CHOICE  
FOR RESIDENTIAL  
SWING GATES



CHAMBERLAIN®  
**ELITE™**



**ROBOSWING™**  
**Engineered for state-of-the-art safety and reliability**

The RoboSwing™ is our most advanced swing gate operator for single family residences and residential complexes up to 15 units. Designed for super-quiet operation, it can handle up to 250 cycles per day\* with gates weighing up to 400 lbs. and up to 16 feet in length.

Unlike other systems, the RoboSwing™ is designed with a "non-scissor action" swing arm to greatly reduce the risk of injury. What's more, the system features a DC motor with a 12-volt, 7-amp hour battery for dependable operation, even when the power goes out. Plus, this system helps to simplify installation by allowing installers to use low-cost, low-voltage wiring or an optional solar panel for operator use in remote locations.

\*250 cycles when used with the plug-in transformer

**Built-in strength, safety and convenience features**

Elite™ operators are skillfully crafted in every detail. Each model features the most advanced and most complete list of components available in the industry.



**Motor**  
Permanent magnetic 12-volt DC motor.



**Control Board**  
Modular control board uses LEDs to indicate all input and output functions of the operator.



**Battery**  
Sealed 12-volt, 7-amp battery for long operational life.



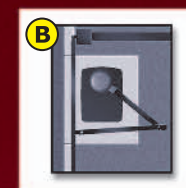
**Modular Surge Suppressor**  
Protects the RoboSwing™ from near lightning strikes.



**Release**  
The gate can be easily disconnected by turning the release handle. To operate the gate manually, pull release handle 180°, then push the gate open.



**Non-Scissor Action Arm**  
Most swing gate operator arms will cross and produce a dangerous "scissor" action while opening the gate to 90° opening, as shown in picture **A**. We designed our RoboSwing™ operator arms to not cross, eliminating the scissor action, as shown in picture **B**. This feature reduces the risk of injury from the gate operator arm.



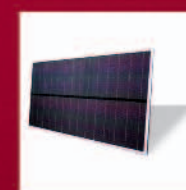
**Reversing Sensor**  
If the gate hits a vehicle while closing, it reverses. If it hits a vehicle while opening, it stops, reverses several inches, and stops again.



**Limit Switch**  
The RoboSwing™ limit switch system uses high-speed ball bearings.



**Access Door**  
With key lock and made of heavy-duty stainless steel.



**Optional Solar Panel**  
Allows RoboSwing™ to operate in remote locations.