

CHAMBERLAIN®

**SENTEX®**

---



**CROWN JEWEL SOFTWARE FOR WINDOWS  
SOFTWARE REV. 2.00 AND UP**

**Crown Jewel (with Camera)**



**Crown Jewel (Brass Enclosure)**



**User's Guide**

# TABLE OF CONTENTS

## Getting Started

System Requirements	.3
Installing CJWin	.3
Starting CJWin	.4
The Main Menu	.4
CJWin "Help" Features	.5
Set Up a New Unit (Overview)	.5-6

## Unit Management

Creating a Unit File	.7
Adding Multiple Units That Share a Single Phone Line	.8
Opening a Unit File	.8
Setting a Unit's Date and Time	.8-9
Using the "Save As" Feature	.9
Deleting a Unit File	.9

## Communications

Configuring the Port and Modem Settings	.10
Connecting to a Unit	.11
Receiving (Downloading) Data from a Unit	.12
Sending (Uploading) Data to a Unit	.13

## Edit Unit Features

Editing Unit Features	.14
Call Waiting	.14
Visitor Ring Type	.14
Visitor Ring Limit	.15
Visitor Time Limit	.15
Maximum Keypad Errors	.15
Visitor Calls to Other Tenants (Dialing Codes)	.15

## Edit Unit Configuration

Editing the Unit Configuration	.16
Alarm Conditions	.17
Visitors	.17-18
Unit Communication Configuration	.18-20
Telephone Company (Telco) Connected	.20
Unit and FID Number	.20

## Time Zones and Holidays

About Time Zones	.21
Creating or Editing Time Zones	.22
Erasing a Time Zone	.22
About Holidays	.22
Creating or Editing Holiday Schedules	.23
Erasing a Holiday Schedule	.23

## Other Schedules

About the Do Not Disturb Schedule	.24
Setting Up a Do Not Disturb Schedule	.25
Editing a Do Not Disturb Schedule	.25
Erasing a Do Not Disturb Schedule	.26
About Unlock Schedules	.26
Main Gate Unlock Schedule	.26-27
Auxiliary Relay Unlock Schedule	.27

## Entry Codes

About Entry Codes	.28
Adding Entry Codes	.29
Editing Entry Codes	.29
Erasing Entry Codes	.29

## Call Forwarding

About Call Forwarding	.30
Enabling Call Forwarding	.30
Setting Up a Call Forwarding Schedule	.31

## Unit Transactions

About Unit Transactions	.32
Retrieving Unit Transactions	.32
Viewing and Erasing Transactions	.32

## Using the Control Panel

Accessing the Control Panel	.33
Main Gate Commands	.34
Auxiliary Relay Commands	.34
Special Control Panel Commands	.34

## Printing

Printing Transactions	.35-36
Printing the Unit's Current Information	.36

# GETTING STARTED

This section will cover . . .

- [System Requirements](#) Page 3
- [Installing CJWin](#) Page 3
- [Starting CJWin](#) Page 4
- [The Main Menu](#) Page 4
- [CJWin “Help” Features](#) Page 5
- [Set Up a New Unit \(Overview\)](#) Page 5

## System Requirements

To run CJWin software, your system must have an IBM PC-compatible computer running Windows 95 (full version) or higher, **Internet Explorer** 4.01 (Service Pack 2) or higher (5.0 or higher recommended) and the following:

### MINIMUM

Pentium 166 Processor  
32 MB of RAM  
200 MB hard disk free  
Hayes-compatible modem connected  
to a COM port  
CD ROM  
Mouse

### RECOMMENDED

Pentium II Processor  
128 MB of RAM  
300 MB hard disk free

## Installing CJWin

In order for CJWIN to operate properly, it must be installed onto the computer hard disk drive. CJWIN cannot be executed directly from the CD.

CJWin is compatible with Windows 95 (full version) or higher.

- **Windows 95 Users:** You must have Y2K Update installed on your machine.
- **Windows 98 (before Second Edition) Users:** You must have Y2K Update 2 installed on your machine - does not apply to Windows 98, Second Edition.
- **Windows NT 4 Users:** You must have Service Pack 6 (or greater) installed on your machine.
- **Windows NT/2000/XP Users:** You must have administrator privileges to install CJWin.

**NOTE:** CJWin will not run in Windows 3.1 or 3.11. You must be running Windows 95 (full version) or above to run the application.

To install CJWIN Software, perform the following steps:

1. Start Windows.
2. Place the CJWin CD in the CD ROM drive. CJWin will automatically start the installation process; follow the on-screen prompts. If the installation process does not automatically start, continue with step 3.
3. From the taskbar, select the **Start** Button, point to **Settings**, then click on **Control Panel**.
4. From the Control Panel window, double-click on **Add/Remove Programs**.
5. From the Add/Remove Programs screen, under the Install/Uninstall tab, click **Install**.
6. Follow the on-screen prompts.

**NOTE:** CJWin may prompt you to reboot your machine a few times during the installation process. This is required by Microsoft. If after each reboot CJWin does not automatically continue with the installation process, double-click on the Setup.exe file in the CJWin software installation CD.

### WINDOWS NT/2000/XP USERS ONLY

If there are multiple CJWin users, you must perform these last two steps after CJWin has completed its installation:

- Provide shared privileges for the entire CJWin subdirectory (and any other directory that will store the databases) **AND**
- Grant “Full Control” permission for each CJWin user to each subdirectory storing the CJWin databases.

# GETTING STARTED

## Starting CJWin

From the **Desktop** (if a shortcut exists): Double-click the **CJWin32** icon.

OR

From the **Start** menu:

1. Click on **Start**.
2. From the fly-up Start menu, select **Programs**.
3. From the fly-out Programs menu, select **Sentex Applications**.
4. From the Sentex Applications menu, select **CJWin32**.

### NOTES:

- **Sentex Applications** is the default name of the program group and will appear unless you change the program group name at installation.
- To create a shortcut to CJWin, drag the **CJWin32.EXE** file icon onto the desktop (see *Windows User Guide* for details).
- The first time you start CJWin after installation, it will automatically display the **Modem Setup** screen. For information on this screen, see **Configuring the Port and Modem Settings** on page 14.

## The Main Menu

Each time you activate the CJWin program, the Main Menu will be displayed (Figure 1).

The Main Menu is divided into different areas: Start Here, File, Edit, Communicate, View, and Print. Each area contains a series of “buttons” allowing you to enter different setup areas.



Figure 1: The Main Menu

# GETTING STARTED

## CJWin “Help” Features

**HTML help** - Press F1 on your keyboard to open the CJWin Help file. Use the help to answer questions about CJWin or to learn more about it.

**Balloon help** - Balloon help is available on most screens, providing a brief identifying statement describing most buttons and many screen features. The “balloon” is a small yellow box that appears near the item it describes.

**Status bar** - The status bar is located at the bottom of most screens and provides screen information or helpful suggestions.

**What Next** - The What Next feature is located in the Start Here box of the Main Screen. Click it for What Next suggestions.

## Set Up a New Unit (Overview)

When setting up *new* units, Sentex recommends that you follow the setup sequence provided below.

- You do not have to use all the features listed below. Only the steps marked with an asterisk (\*) are required.
- After entering information in each area, do not forget to save the data in the Main Menu. **All unsaved data will be lost!**

### 1. PROGRAM THE MODEM SETTINGS:\*

Find the modem port; then identify and test the modem initialization string. For more details, see **Configuring the Port and Modem Settings** on page 10.

### 2. CREATE A NEW UNIT:\*

Create a file for your Crown Jewel units. For more details, see **Creating a Unit File** on page 7. If you have more than one unit sharing a telephone line, CJWin will create a file for each unit (see **Adding Multiple Units That Share a Single Phone Line** on page 8).

### 3. RECEIVE SETTINGS FROM THE UNIT:\*

CJWin needs to know the current configuration of your unit(s). If you have more than one unit, perform this step for each unit. For more details, see **Receiving (Downloading) Data from a Unit** on page 12.

### 4. SET THE UNIT'S DATE AND TIME:\*

Some of the Crown Jewel's most powerful access controls are time-based and date-based. If you have more than one unit, perform this step for each unit. For more details, see **Setting a Unit's Date and Time** on page 9.

### 5. EDIT UNIT FEATURES:

This feature allows you to set call waiting, visitor ring type, visitor ring limit, maximum keypad errors, and visitor call to guest houses, etc. If you have more than one unit, you will need to perform this step for each unit. For more details, see **Edit Unit Features** on page 14.

### 6. EDIT UNIT CONFIGURATION:

This feature allows you to determine how the unit will respond to alarm conditions, visitors, specifics of communicating with the unit, telephone company information, and the unit's number and FID number. If you have more than one unit, you will need to perform this step for each unit. For more details, see **Edit Unit Configuration** on page 16.

### 7. TIME ZONES:\*

This feature allows you to restrict or allow access on different days at varying times. If you have more than one unit, you will need to perform this step for each unit. For more details, see **Time Zones and Holidays** on page 21.

# GETTING STARTED

## Set Up a New Unit (Overview continued)

### 8. ENTRY CODES:\*

This feature allows you control access in several ways. If you have more than one unit, you will need to perform this step for each unit. For more details, see **Entry Codes** on page 28.

**NOTE:** You must set up Time Zones before setting up Entry Codes.

### 9. HOLIDAYS:

This features gives you the ability to restrict or allow access for holidays. If you have more than one unit, you will need to perform this step for each unit. For more details, see **Time Zones and Holidays** on page 21.

### 10. DO NOT DISTURB SCHEDULES:

This feature allows you to deny visitor access during the hours you specify (such as late night/early morning hours). If you have more than one unit, you will need to perform this step for each unit. For more details, see **Setting Up a Do Not Disturb Schedule** on page 25.

### 11. CALL FORWARDING:

This feature allows you to have visitor calls forwarded to another telephone number. If you have more than one unit, you will need to perform this step for each unit. For more details, see **Call Forwarding** on page 30.

### 12. UNLOCK SCHEDULES:

This feature gives you the ability to allow unlimited access during certain hours on certain days. For example, you may wish to allow unrestricted access on weekdays from 7:00 am to 9:00 am. If you have more than one unit, you will need to perform this step for each unit. For more details, see **About Unlock Schedules** on page 26.

### 13. SEND CHANGES TO THE UNIT:

Once you have completed programming CJWin, you must then send all the changes to the unit. If you have more than one unit, you will need to perform this step for each unit. For more details, see **Sending (Uploading) Data to a Unit** on page 13.

## MULTIPLE CROWN JEWEL UNITS SHARING A PHONE LINE

If you have more than one Crown Jewel unit and they will be sharing a telephone line, program each unit individually.

1. When you create a new unit, enter the number of Crown Jewel units sharing the same telephone line. CJWin will create a file for each unit. See **Adding Multiple Units That Share a Single Phone Line** on page 8 for more information.
2. Program each unit.

# UNIT MANAGEMENT

This section will cover . . .

- [Creating a Unit File](#) Page 7
- [Adding Multiple Units That Share a Single Phone Line](#) Page 8
- [Opening a Unit File](#) Page 8
- [Setting a Unit's Date and Time](#) Page 8-9
- [Using the "Save As" Feature](#) Page 9
- [Deleting a Unit File](#) Page 9

## Creating a Unit File

Before programming your Crown Jewel unit with CJWin, you will need to let CJWin know about your unit's current configuration by following these steps:

1. Set the Port and Modem Settings in CJWin. For more details, see page 10.
2. Open a New or Current Unit File. For more details on opening a current system, see page 8.
3. Receive data from the unit(s). For more details, see page 12.

To create a new unit file:

1. From the Main Menu, click **New** in the File box. The Data File Names Screen will be displayed (see Figure 2).

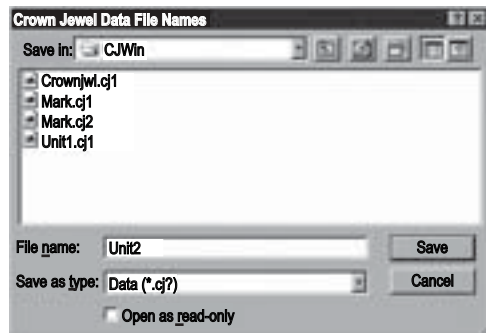


Figure 2: Data File Names

2. Type in a **File name** for the new unit. This name can be up to 8 characters in length and can include letters, numbers, and punctuation.
3. Click **Save**.
4. CJWin will display a dialogue box asking how many units you have in your system. Enter the number of units.  
**NOTE:** *If you have more than one unit sharing the same telephone line, see page 8.*
5. Click **OK** and CJWin will return you to the Main Menu.
6. Click **Save**.

## Adding Multiple Units That Share a Single Phone Line

When more than one unit share a single phone line, follow the instructions below when adding them to CJWin.

1. From the Main Menu, click **New** in the File box. The Data File Names Screen will be displayed (see Figure 2).
2. Type in a **File name** for the new unit. This name can be up to 8 characters in length and can include letters, numbers, and punctuation.
3. Click **Save**.
4. CJWin will display a dialogue box asking how many units you have in your system. Enter the number of units that will be sharing a single telephone line.

CJWin will create a unit file for each unit. The name of each unit will be the name you entered, with an extension of “CJ1” for the first unit, “CJ2” for the second unit, “CJ3” for the third unit, etc.

**Example:** If you name the units “MyHouse”, the name of the first unit will be “MyHouse.cj1”; the second unit “MyHouse.cj2”; etc.

5. Click **OK** and CJWin will return you to the Main Menu.
6. Click **Save**.

**IMPORTANT NOTE:** You will need to follow all the programming steps for each unit individually.

## Opening a Unit File

To view or edit a unit file, you must first open it:

1. From the Main Menu, click **Open** in the File box.
2. At the Data File Names screen, select the unit's file name.
3. Click **Open**. When CJWin displays the Main Menu, the name of the unit you just opened will appear in the upper left-hand corner of the top status bar.

## Setting a Unit's Date and Time

**NOTE:** If you have not yet configured the port and modem settings for the unit, do so before continuing. See page 11 for details.

The Crown Jewel unit's internal calendar and clock are used for:

Before you use any of the following features, set the unit's date and time. In the upper-right hand corner of the Main Menu is the date and time currently set in your computer. If this information is not correct, correct it before continuing (refer to your *Windows User's Guide*).

- Time Stamping of Transactions
- The Do Not Disturb Feature
- Entry Codes with Time Zones
- Gate Unlock Schedules
- Call Forwarding Schedules

1. **If you have more than one Crown Jewel unit:** Open the unit you wish to work on. See Opening a Unit File above.
2. Connect to the unit. See page 15 for details.
3. If the computer's clock is correct, verify that the unit's clock matches the computer's.
4. If the clock's match, you do not need to change the unit's clock. Go to step 6.  
If the clock's **do not** match, click the **Set Clock** button and continue with step 5.

# UNIT MANAGEMENT

## Setting a Unit's Date and Time (continued)

5. If you see the **Time Adjustment** screen (Figure 3), set the correct time for the unit. Click **OK**. CJWin will then send your computer's information to the Crown Jewel unit.

If you **do not** see the Time Adjustment screen continue with step 6.

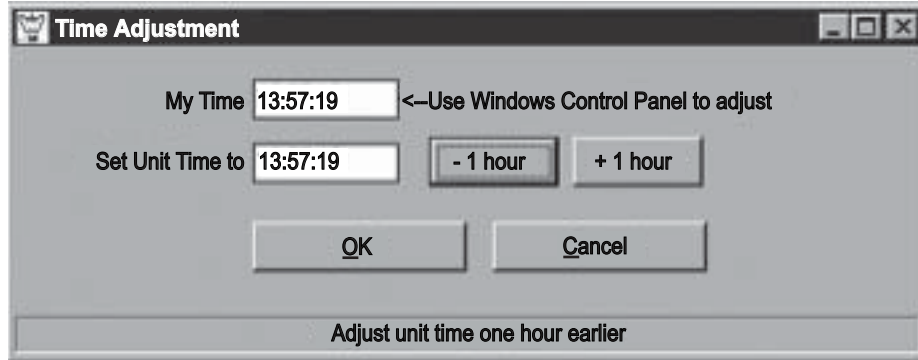


Figure 3: Time Adjustment Screen

6. Click **Disconnect** to end communication.

7. Click **Done** to return to the Main Menu.

## Using the “Save As” Feature

Use this feature to save a copy of a unit. When you select a unit to “Save As”, CJWin will create a copy of the unit and all its data, but with a different name that you define.

**NOTE:** When using the “Save As” feature, all data (including unsaved data) will be copied to the new unit.

To save a copy of a unit:

1. At the Main Menu, click **Save As** from the File box.
2. At the **Data File Names** screen, select the unit to copy.
3. Change the **File name**.
4. Click **Save**.

## Deleting a Unit File

Deleting a unit file will delete all the unit's data from CJWin.

To delete a unit file:

1. At the Main Menu, click **Open** from the File box.
2. At the **Data File Names** screen, select the unit to delete.
3. Right-click over the unit and select Delete from the pop-up menu.
4. Click **Save**.

## CAUTION

Delete **ONLY** if you are absolutely sure you **DO NOT** need the unit file or its data in CJWin.

# COMMUNICATIONS

This section will cover . . .

- Configuring the Port and Modem Settings Page 10
- Connecting to a Unit Page 11
- Receiving (Downloading) Data from a Unit Page 12
- Sending (Uploading) Data to a Unit Page 13

## Configuring the Port and Modem Settings

Before you first communicate with your Crown Jewel unit, you must enter your communication port and your modem settings in CJWin. Unless your port or modem settings change, you will only have to perform these instructions once.

**MODEM NOTE:** CJWin may not be able to identify your modem. If CJWin does not connect with your Crown Jewel unit using the recommended string, you may need to modify the initialization commands to make your modem work correctly. To modify the modem initialization string so that it can communicate with the Crown Jewel unit, it must have the following features:

- BELL103 protocol
- No data compression
- No protocol negotiation
- DTE speed 300 bits per second
- No error correction
- No automatic speed changing

If you need assistance with your modem, including help with editing the modem initialization string, contact your computer retailer or modem manufacturer.

To configure your port and modem settings:

1. From the Main Menu, click the Modem Setup button in the Communicate box. The Modem Setup Screen will appear (Figure 4).

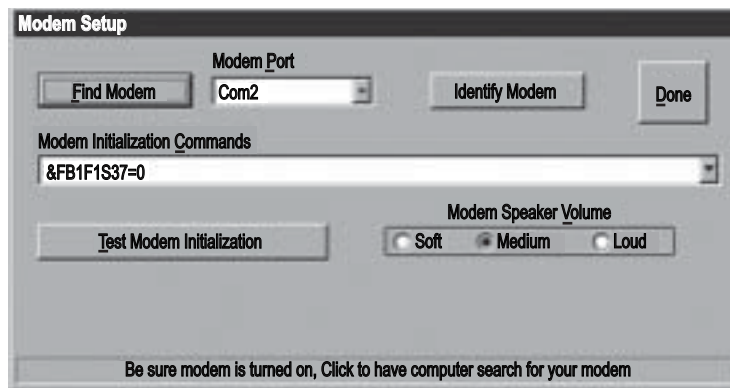


Figure 4: Modem Setup Screen

2. Click the Find Modem button. CJWin will display the port in the Modem Port box located to the right of the Find Modem button.
3. Click the **Identify Modem** button to identify the type of modem that is connected to your computer. CJWin will display a recommended modem initialization string in the Modem Initialization box.
4. Click the **Test Modem Initialization** button. CJWin will test the Modem Initialization string.  
If the Modem Initialization string is acceptable, CJWin will respond with an "OK" message. If the Modem Initialization string is not acceptable, "ERROR" will appear on the screen. In this case, edit the commands according to the instructions for your modem and try again.
5. Select the preferred **Modem Speaker Volume**.
6. Click **Done**. You will be returned to the Main Menu.
7. Click **Save**.

# COMMUNICATIONS

## Connecting to a Unit

Once you have established your computer's port and modem settings (refer to page 10), you can connect to the unit.

1. **Open** the unit file (refer to page 10 for details).
2. Click the **Connect** button in the Communicate box of the Main Menu. The Communicate screen will appear (Figure 5).

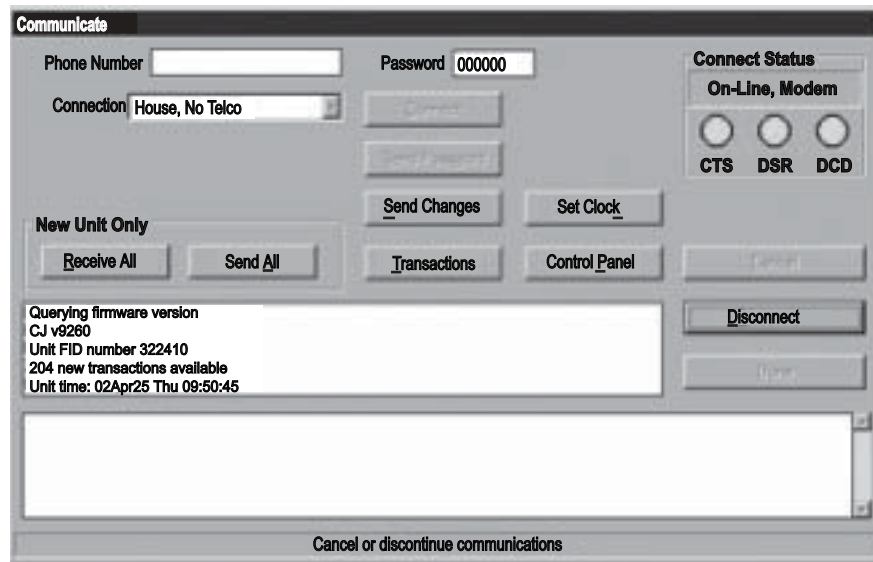


Figure 5: Communicate Screen

3. In the Connection drop-down box, enter the connection type:
  - **House** - When programming the unit via the telephone line.
  - **Remote, Automatic** - When programming the unit through a telephone line other than the line connected to the Crown Jewel unit. If you choose this selection, the programming password will be sent automatically during initial communication.
  - **Remote, Auto. Override** - Tells CJWin that the telephone company answering service or voice mail usually answers the phone before the Crown Jewel unit, interfering with remote programming. The Remote Automatic Override selection allows CJWin to override this remote programming interference. (See the Using the Advanced Features of the Crown Jewel System manual).
  - **Remote, Manual** - Requires you to manually enter the programming password during initial communication.
  - **Remote, Man. Override** - Allows CJWin to override the telephone company's interference with remote programming (see the Using the Advanced Features of the Crown Jewel System manual). You will also need to manually enter the programming password during initial communication.
  - **House, No Telco** - The House, No Telco selection notifies the CJWin program that you are programming the unit through the house telephone, but there is no telephone company connection on this line.
  - **Other** - This selection is for factory use only.
4. If you are communicating with the system via a telephone line other than the one connected to the unit, enter the telephone number of the Crown Jewel unit in the **Phone Number** box.
5. Enter the unit **Password**.
6. Click the **Connect** button.

The communication box (located in the middle of the screen) will provide status text of CJWin connecting with the Crown Jewel unit. Once communication has been established, the phrase "On-Line, Modem" will be displayed in the Connect Status box in the upper right-hand corner of the screen.

You may break the connection at any time by clicking the **Disconnect** button.

# COMMUNICATIONS

## Receiving (Downloading) Data from a Unit

There are two common cases when it's best to receive data from a unit:

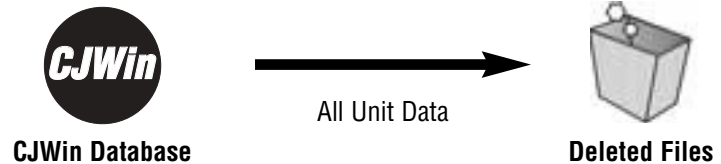
- **When a New Unit is Installed:** After a new unit is installed, receive the data from the unit before you begin entering data into CJWin. If you enter data into CJWin before receiving data from the unit, perform a Send Changes command first (see page 13 for more details) followed by a Receive All command.
- **When Data is Entered at the Unit:** When data is entered manually at the Crown Jewel unit, CJWin will not have this data in its database until you perform a Receive All command. Before you perform a Receive All command, perform a Send Changes command.

**IMPORTANT NOTE:** When you perform a Receive All command, CJWin will remove the unit's data from the CJWin database and replace it with the data from the unit. If you have edited the CJWin database since your last Send or Receive command, perform a Send Changes command before receiving data from the unit.

### THE RECEIVE ALL COMMAND (HOW IT WORKS)

When you perform a Receive All command:

**Step 1:** CJWin deletes the unit's data from the CJWin database.



**Step 2:** CJWin receives (downloads) all the data from the Crown Jewel Unit.



### PERFORMING A RECEIVE ALL COMMAND

1. **Open** the unit file (refer to page 8 for details).
2. **Connect** to the unit (see page 11 for details).
3. At the Communicate screen, click **Receive All**. CJWin will begin receiving data from the Crown Jewel unit. A status bar showing the amount of data received from the unit will be displayed at the bottom of the screen.
4. When downloading is complete, CJWin will display a message in the status bar stating that all of the data has been received.

# COMMUNICATIONS

## Sending (Uploading) Data to a Unit

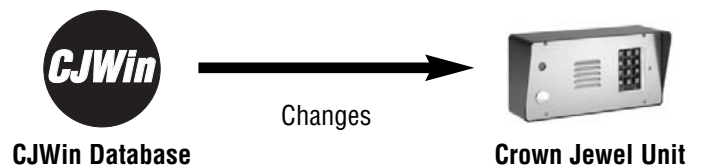
There are two ways to send data to a unit:

- **Send Changes:** This command sends ONLY the changes entered into the CJWin database since the last send command to the Crown Jewel unit. Once the Crown Jewel unit and CJWin database is current, to save time, Send Changes after all subsequent edits to the CJWin database.
- **Send All:** This command deletes all the Crown Jewel unit data and replaces it with the data from the CJWin database. Use if a Crown Jewel unit is replaced, you want to reconfigure the unit, or if the unit and CJWin have mismatched data and the data from the CJWin Unit database is correct.

### SEND CHANGES (HOW IT WORKS)

When you perform a Send Changes command:

CJWin sends ONLY the changes entered into the CJWin database since the last send command to the Crown Jewel unit.



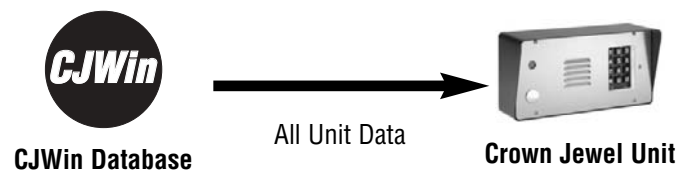
### SEND ALL (HOW IT WORKS)

When you perform a Send All command:

**Step 1:** The Crown Jewel Unit deletes the data from its database.



**Step 2:** CJWin sends (uploads) all the data to the Crown Jewel Unit.



### PERFORMING A SEND CHANGES OR SEND ALL COMMAND

Use the **Send Changes** command for normal maintenance and changes.

Use the **Send All** command to transmit the entire CJWin database.

1. **Open** the unit file (refer to page 8 for details).
2. **Connect** to the unit (see page 11 for details).
3. At the Communicate screen, click **Send Changes** or **Send All**.
4. When CJWin completes the transmission, click **Disconnect**.

# EDIT UNIT FEATURES

This section will cover . . .

- Editing Unit Features Page 14
- Call Waiting Page 14
- Visitor Ring Type Page 14
- Visitor Ring Limit Page 15
- Visitor Time Limit Page 15
- Maximum Keypad Errors Page 15
- Visitor Calls to Other Tenants (Dialing Codes) Page 15

## Editing Unit Features

1. **Open** the unit file (refer to page 8 for details).
2. From the Main Menu, click the **Features** button in the Edit box. The Edit Unit Features screen will appear (Figure 6).

Code	Phone Number
1#	5557763
2#	
3#	

Figure 6: Edit Unit Features Screen

3. Make any necessary edits.
4. Once you have completed all of your entries in this screen, click the Done button to return to the Main Menu.
5. Click **Save**.
6. Remember to Send Changes to the Crown Jewel unit when you finish editing the CJWin unit data. See page 13 for more details.

## Call Waiting

The Call Waiting feature lets you know, during a regular telephone call, that a visitor is at the entrance.

If your telephone is in use when a visitor presses the “#” key, you will hear two short beeps to signal you that you have a visitor attempting to call. Pressing the “2” on your tone dial phone will put the telephone call on hold and connect your phone to the Crown Jewel unit.

**NOTE:** This feature applies only to calls made to the main residence phone, not to other tenants via Dialing Codes.

## Visitor Ring Type

The Visitor Ring Type feature allows you to assign the type of ring the Crown Jewel unit will use to signal you that there is a visitor call coming in from the unit.

- If you choose **Double** for this setting, the telephone will emit two short rings when a call is coming from the Crown Jewel unit.
- If you choose **Single** for this setting, a visitor call coming from the unit will sound like a normal outside telephone call.

# EDIT UNIT FEATURES

## Visitor Ring Limit

The Visitor Ring Limit feature allows you to program the number of rings the unit will allow before it automatically discontinues the call placed to the residence. This entry can be from 1 to 24 rings.

**Factory Settings:** 12 rings.

## Visitor Time Limit

The Visitor Time Limit feature allows you to program the maximum number of seconds allowed for a visitor call from the Crown Jewel unit. This entry can be from 15 to 250 seconds.

**Factory Settings:** 90 seconds.

## Maximum Keypad Errors

The Maximum Keypad Errors feature allows you to program the number of wrong entries that can be entered consecutively on the unit's keypad before the unit stops accepting codes for 3 minutes. This setting can be from 0 to 9 keypad errors ("0" will disable the feature for the specified keypad).

**Factory Settings:** 5 keypad errors.

There are two boxes in the Maximum Keypad Errors area:

- The **first box** on the Edit Unit Features screen is for **Keypad 1**.
- The **second box** on the Edit Unit Features screen is for **Keypad 2**.

## Visitor Calls to Other Tenants (Dialing Codes)

A visitor can place a call to another tenant (any location other than the main residence) through the use of dialing codes.

**Example:** If the owner of a residence has a renter living in a guest house and the owner does not want to be bothered with visitor calls to the renter, s/he can program a dialing code to dial the telephone number in the guest house. The visitor can dial the renter directly without having to disturb the owner.

Each unit has the capacity to program up to three (3) single-digit dialing codes.

When entering dialing codes:

1. At the Edit Unit Features screen, move the cursor into the box next to the code you wish to program.
2. Enter the telephone number that you want associated with that code. The telephone number can be up to 12 digits in length.

# EDIT UNIT CONFIGURATION

This section will cover . . .

- [Editing the Unit Configuration](#) Page 16
- [Alarm Conditions](#) Page 17
- [Visitors](#) Page 17-18
- [Unit Communication Configuration](#) Page 18-19
- [Telephone Company \(Telco\) Connected](#) Page 20
- [Unit and FID Number](#) Page 20

## Editing the Unit Configuration

This section describes in detail how to enter information in the Edit Unit Configuration screen.

1. **Open** the unit file (refer to page 8 for details).
2. From the Main Menu, click the **Configuration** button in the Edit box. The Edit Unit Configuration screen will appear (Figure 7).

**Edit Unit Configuration**

Alarm Condition

Alarm Phone Number

Rings Before Answer   Override Interval

Pulse Dial 9 Enable  No  Yes

Visitor Response Keys

Alternate Prefixes  Normal  Mixed  \*  #  None  Num  
Command Prefix = 1# Password Prefix = 11\*

Allow Direct Commands from  None  House  Remote  Both

**Installation**

Activation Times

Auxillary Relay is

Status Input 2 is  Exit Request  Position Sense

Telco Connected  No  Yes

Thresholds: Off-Hook   On-Hook

Unit number  of  FID

Sets the direct command (##) and programming (\*\*\*) prefixes

Figure 7: Edit Unit Configuration Screen

3. Make any necessary edits.
4. Once you have completed all of your entries in this screen, click the **Done** button to return to the Main Menu.
5. Click **Save**.
6. Remember to Send Changes to the Crown Jewel unit when you finish editing the CJWin unit data. See page 17 for more details.

# EDIT UNIT CONFIGURATION

## Alarm Conditions

The Alarm Condition feature allows you to program the Crown Jewel to generate an alarm call when specific conditions occur. These specific conditions are the choices that you will make in this area.

**IMPORTANT NOTE:** When enabling the Alarm Condition feature, program the destination of the alarm call by entering a telephone number in the Alarm Phone Number area (see below for more information regarding the Alarm Phone Number area).

- **None:** The unit will disable the alarm call feature and no action will be taken by the Crown Jewel.
- **Gate Breach:** The unit will place an alarm call if the door/gate attached to Relay 1 has been forced or left open. **NOTE:** To use this option, install a positioning switch on the door or gate.
- **Keypad Strikeout:** The unit will place an alarm call if the Maximum Keypad Errors feature is activated.
- **Breach or Strikeout:** The unit will place an alarm call if either the door/gate attached to Relay 1 is forced or left open or the Maximum Keypad Errors feature is activated (for more information regarding the Maximum Keypad Errors feature, see page 15).

## ALARM PHONE NUMBER

The Alarm Phone Number area allows you to program the telephone number that the Crown Jewel will dial in an alarm condition. The Alarm Phone Number can be up to 12 digits in length.

**IMPORTANT NOTE:** The factory setting for the Alarm Condition feature is disabled. Therefore, even if you enter a telephone number in this area, you must enable the Alarm Condition feature (see above) in order for the Alarm Call to be placed.

## Visitors

### RINGS BEFORE ANSWER

The Rings Before Answer feature allows you to set the number of rings the Crown Jewel will overlook before it answers your telephone line. This entry can be set from 0 to 24 rings.

**To Disable:** Set the ring count to “0”.

**Factory Setting:** 12 rings.

### NOTES:

- In a multiple unit installation, set the ring count for unit 1 since it is the only unit that will answer.
- To use the remote programming feature, set the answer ring count to some value other than zero (0).

### PULSE DIAL ACTIVATION

The pulse dialing feature will give you the ability to allow entry to a visitor by dialing a “9” on a pulse (rotary) dialing telephone.

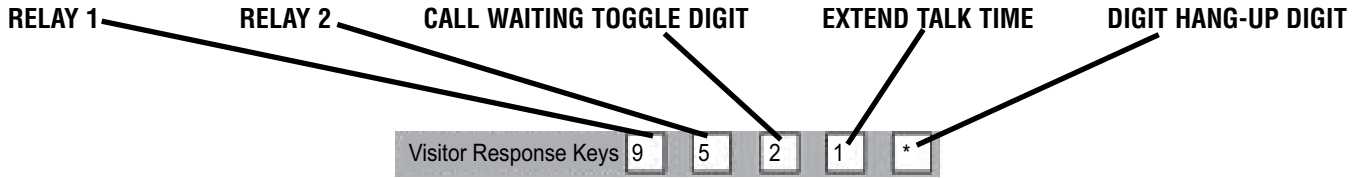
- To **enable** the Pulse Dial Activation feature, select “**Yes**”.
- To **disable** the Pulse Dial Activation feature, select “**No**”.

# EDIT UNIT CONFIGURATION

## VISITOR RESPONSE KEYS

The Visitor Response Keys area allows you to program the digits that the resident will press on his/her telephone keypad to either activate the relays, toggle the call waiting, extend the talk time, or disconnect the visitor call.

There are five boxes in this area:



You may change any of these settings to a different digit, as long as that digit also appears on a standard telephone keypad and is not currently being used. The factory settings for these boxes are as follows:

<b>RELAY 1</b>	<b>RELAY 2</b>	<b>CALL WAITING TOGGLE DIGIT</b>	<b>EXTEND TALK TIME DIGIT</b>	<b>HANG-UP DIGIT</b>
9	5	2	1	*

**NOTE:** If you have entered a digit that is currently being used for a different function, CJWin will automatically change the digit to a number that is not being used.

## Unit Communication Configuration

### ALTERNATE PREFIXES

You may send Direct Commands to the unit, or enter programming mode, from the keypad, resident telephone, or a remote telephone.

- To send Direct Commands, enter “##”.
- To enter programming mode, enter “\*\*\*”.

This causes the Crown Jewel to disconnect from the telephone call in order to receive instructions.

Some telephone companies offer special features that require dialing either “#” or “\*”. If you subscribe to such services and the Crown Jewel interferes with them, you can change the Direct Command prefix or the programming prefix for the Crown Jewel. For more information about Direct Commands and programming, see *Crown Jewel Advanced Features Programming*.

The selections include:

- **Normal:** The telephone operates normally and the prefix for Direct Commands is “##” and the prefix for entering the programming mode is “\*\*\*”.
- **Mixed:** The prefix for the Direct Commands is a combination of the two keys (i.e., “\*#” or “\*#”) and the prefix for programming is a combination of three keys (i.e., “#\*#” or “\*#\*”).
- **Stars:** The Direct Commands prefix is “\*\*” and the prefix for programming is “\*\*\*”.
- **Pounds:** The Direct Commands prefix is “##” and the prefix for programming is “###”.
- **None:** The resident will not be able to program from the house or use the Direct Commands feature.
- **NUM:** Allows you to choose from a list of preset alternate prefixes. The prefixes are displayed on the line below Alternate Prefixes choice (see Figure 8).

**NOTE:** If you select NUM, you will need to select the prefixes from the list of presets (see Figure 8).

**Example:** You could choose NUM for the prefix, then select “2#” from the drop-down menu of choices. To send direct commands, you would press “2#”; to enter programming mode (the Password Prefix) you would press “22\*” (see Figure 8).

# EDIT UNIT CONFIGURATION

**Edit Unit Configuration**

Alarm Condition: Breach or Strikeout

Alarm Phone Number: 5554433

Rings Before Answer: 5 (Override Interval) 20

Pulse Dial 9 Enable:  No  Yes

Visitor Response Keys: 9 5 2 1 \*

Alternate Prefixes:  Normal  Mixed  \*  #  None  Num  
 Command Prefix = 1# Password Prefix = 11\*

Allow Direct Commands from:  None  House  Remote  Both

**Installation**

Activation Times: 10 10

Auxillary Relay is: Control

Status Input 2 is:  Exit Request  Position Sense

Telco Connected:  No  Yes

Thresholds: Off-Hook 20 200 On-Hook

Unit number 1 of 1 FID 322410

Sets the direct command (##) and programming (\*\*\*) prefixes

Figure 8: Alternate Prefixes (NUM)

## ALLOW DIRECT COMMANDS FROM

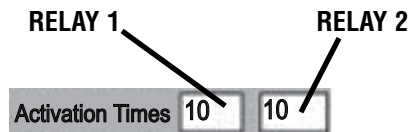
To enter direct commands from a remote telephone, enable the Allow Direct Command From option.

**Example:** If you forgot to latch the gate attached to Relay 1, you can call the Crown Jewel unit and give it the direct command to latch the relay. For exact instructions, see the *Crown Jewel Advanced Features Programming* manual.

- To **enable** the Allow Direct Commands From feature, select “**Yes**”.
- To **disable** the Allow Direct Commands From feature, select “**No**”.

## ACTIVATION TIMES

Activation Time sets the period of time (in seconds) when the relays will remain activated.



The relay activation time can be set anywhere from 1 to 250 seconds.

**Factory Setting:** 10 seconds.

**IMPORTANT NOTE:** If one (or both) of the relays activate a gate operator with a momentary closure, set the relay activation time for a short period of time (for example, 2 seconds). If you set the relay activation time for a longer period of time, there is a possibility that the gate will continue to open and close until the relay activation period has ended.

# EDIT UNIT CONFIGURATION

## AUXILIARY RELAY AND STATUS INPUT 2

The area titled "Auxiliary Relay 1s" allows you to select the mode of operation for the unit's second relay and status input. The selections include:

- **Relay 2=Control, Status 2=Exit Request 2:** Relay 2 will activate when you dial a "5" on your telephone during a visitor call or when the Exit Request Device has been activated.
- **Relay 2=Shunt, Status 2=Position Sense 1:** Relay 2 will activate whenever the main relay activates to temporarily bypass an alarm sensor monitoring this entry.
- **Relay 2=Alarm, Status 2=Position Sense 1:** Relay 2 will activate if (1) the controlled entry is forced open, (2) if the entry is held open for more than one minute after the main relay has deactivated, or (3) the Maximum Keypad Errors feature has been violated.
- **Relay 2=CCTV Manual, Status 2=Position Sense 1:** Relay 2 will activate the closed circuit TV when you dial a "5" on your telephone during a visitor call.
- **Relay 2=CCTV Instant, Status 2=Position Sense 1:** Relay 2 will activate the closed circuit TV when the main relay activates.
- **Relay 2=Control, Status 2=Position Sense 1:** Relay 2 will activate when you dial a "5" on your telephone during a visitor call or when the Position Sense device has been activated.

## Telephone Company (Telco) Connected

The Telco Connected area tells the Crown Jewel if there is a telephone company line connected to it. The Crown Jewel will need this information because if it thinks that there is a telephone company line attached and it does not detect a dial tone, normal operation may be interrupted.

- If the unit ***is*** connected to a telephone company line, select "**Yes**".
- If the unit ***is not*** connected to a telephone company line, select "**No**".

## Unit and FID Number

- **Unit Number:** Sequential number that the installer assigned to the unit that has the telephone line attached to it. This number can be between 1 and 7 but, in most installations, it will be "1".
- **FID Number:** (6) six-digit factory set number located on the processor chip label (Main Processor Board). Your installer should have given you these numbers when the unit was installed.

# TIME ZONES AND HOLIDAYS

This section will cover . . .

- [About Time Zones](#) Page 21
- [Creating or Editing Time Zones](#) Page 22
- [Erasing a Time Zone](#) Page 22
- [About Holidays](#) Page 22
- [Creating or Editing Holiday Schedules](#) Page 23
- [Erasing a Holiday Schedule](#) Page 23

## About Time Zones

Time Zones are periods you specify that can restrict the use of certain access codes.

**Example:** You can restrict the entry code that you give to the gardener to only allow access on Mondays between the hours of 9:00 A.M. and 3:00 P.M.

The Crown Jewel has (7) seven different Time Zones with (2) two segments to each Time Zone. Use segments to program schedules that extend past midnight and run into the following day.

**Example:** If you wish to set up a time zone that allows access between the hours of 8:00 P.M. and 4 A.M. Monday through Friday, then you would enter one segment between 8:00 P.M. and Midnight Monday through Thursday and a second segment between Midnight and 4 A.M. Tuesday through Friday.

Edit Time Zones											
Time Zone Segments											
Zone	From	Until	Sun	Mon	Tue	Wed	Thu	Fri	Sat	Hol	
1, Seg 1	09:00	17:00	No	Yes	Yes	Yes	Yes	Yes	No	No	Done
Seg 2											
2, Seg 1	20:30	22:30	No	Yes	Yes	Yes	Yes	Yes	No	No	
Seg 2											
3, Seg 1	09:00	17:00	Yes	No	No	No	No	No	Yes	Yes	
Seg 2											
4, Seg 1											
Seg 2											
5, Seg 1											
Seg 2											
6, Seg 1											
Seg 2											
7, Seg 1											
Seg 2											

Valid on Wednesdays? Enter Yes or No.

Figure 9: Edit Time Zones Screen

# TIME ZONES AND HOLIDAYS

## Creating or Editing Time Zones

1. **Open** the unit file (refer to page 12 for details).
2. From the Main Menu, click the **Time Zones** button in the Edit box. The Edit Time Zones screen will appear (Figure 9).
3. Select the **From** box. Enter the time (in 24 hour format) when the time zone will begin.
4. Select the **Until** box. Enter the time (in 24 hour format) when the time zone will end.
5. Click and enter a "Y" on each day that you wish this time zone to be valid. If you do not enter a "Y" on a specific day, CJWin will automatically enter an "N" in that day.
6. To invalidate a day, select the box for that day and press the "N" key.
7. To program additional time zones, repeat steps 3 through 5.
8. Once you have completed programming your time zones, click **Done**.

## Erasing a Time Zone

1. **Open** the unit file (refer to page 12 for details).
2. From the Main Menu, click the **Time Zones** button in the Edit box. The Edit Time Zones screen will appear (see Figure 9).
3. Select the time zone to delete.
4. Press the DELETE key on your computer's keyboard until all of the information in that box has been erased.
5. To erase more than one time zone, repeat steps 3 and 4.
6. Once you have erased all of the time zones you wish to delete, click **Done**.

## About Holidays

Holidays are special calendar dates with more access control flexibility. Special holiday schedules can be programmed for:

- Do Not Disturb Schedules
- Gate Unlock Schedules
- Entry Codes with Time Zones
- Call Forwarding Schedules

**Example:** If New Year's Day is set up as a holiday, then codes programmed for access on regular business days only will not be granted entry on January 1.

Month	Date	Year	Day of Week
January	1	2003	Wednesday
December	25	2002	Wednesday
July	4	2002	Thursday
May	27	2002	Monday
November	28	2002	Thursday

Click spin arrows to change month

Figure 10: Holidays Screen

# TIME ZONES AND HOLIDAYS

## Creating or Editing Holiday Schedules

1. **Open** the unit file (refer to page 12 for details).
2. From the Main Menu, click the **Holidays** button in the Edit box. The Holidays screen will appear (see Figure 10 on page 22).
3. To program the month, use the up or down arrow buttons next to the **Month** box to select the month.
4. To program the date, use the up or down arrow buttons next to the **Date** box to select the desired date.  
Once the desired date is present in the Date box, CJWin will display the year and the day of the week on which the holiday falls.
5. To program additional holidays, repeat steps 3 and 4.
6. Once you have finished programming all of your holidays, click **Done**.

## Erasing a Holiday Schedule

1. **Open** the unit file (refer to page 12 for details).
2. From the Main Menu, click the **Holidays** button in the Edit box. The Holidays screen will appear (see Figure 10 on page 22).
3. Use the up and down arrow buttons next to the **Holiday** box you wish to erase until the blank selection is present in the box.
4. Use the up and down arrow button next to the **Date** box you wish to erase until the blank selection is present in the box.  
Once the blank selection is located in the Date box, the year and the day of the week for that holiday should disappear.
5. To erase additional holidays, repeat steps 3 and 4.
6. Once you have finished erasing all of your holidays, click **Done**.

# OTHER SCHEDULES

This section will cover . . .

- [About the Do Not Disturb Schedule](#) Page 24
- [Setting Up a Do Not Disturb Schedule](#) Page 25
- [Editing a Do Not Disturb Schedule](#) Page 25
- [Erasing a Do Not Disturb Schedule](#) Page 26
- [About Unlock Schedules](#) Page 26
- [Main Gate Unlock Schedule](#) Page 26-27
- [Auxiliary Relay Unlock Schedule](#) Page 27

## About the Do Not Disturb Schedule

The Do Not Disturb Schedule allows you to program times when all of the visitor calls will be blocked.

**Example:** You can program the Crown Jewel to block calls between 11:00 P.M. Monday night and 7:00 A.M. Tuesday morning.

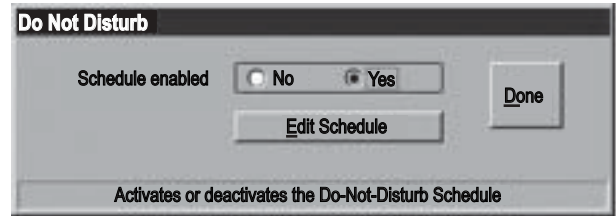


Figure 11: Do Not Disturb Screen

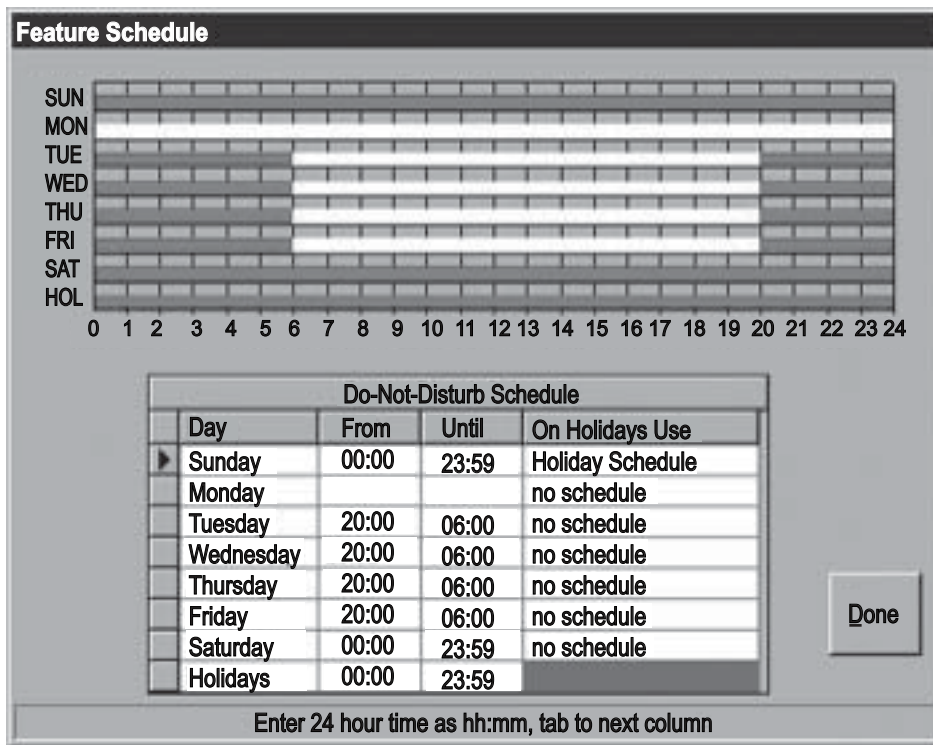


Figure 12: Feature Schedule Screen

## OTHER SCHEDULES

### Setting Up a Do Not Disturb Schedule

**NOTE:** This feature applies only to calls made to the main residence phone, not to other tenants via Dialing Codes.

1. **Open** the unit file (refer to page 12 for details).
2. From the Main Menu, click the **Do Not Disturb** button in the Edit box. The Do Not Disturb screen will appear (see page 24).
3. At the Do Not Disturb screen, select **“Yes”**.
4. Click the **Edit Schedule** button. The Feature Schedule screen will appear (see Figure 12 on page 24).
5. Click in the **From** box next to the day you wish to program. Enter the time in 24 hour format (HH:MM) when the DND schedule will begin.
6. Click in the **Until** box for the day you are programming. Enter the time in 24 hour format (HH:MM) when the schedule will end.
7. Click in the “On Holidays Use” box. Click the link button. The “Holiday Options” screen will appear (Figure 13).

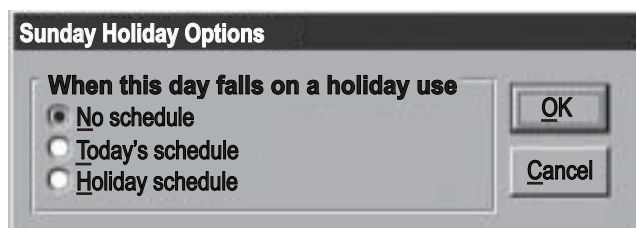


Figure 13: Holiday Options Screen

8. Select one of the following:

**No Schedule:** The Crown Jewel will not activate the Do Not Disturb feature on days that are programmed as holidays.

**Today's Schedule:** The Crown Jewel will treat holidays in the same manner as a “regular” day.

**Example:** If July 4th is programmed as a holiday and it lands on a Wednesday, **and** You have the Holiday option for Wednesdays set to “Today's Schedule”, **and** You have the Do Not Disturb schedule for Wednesdays programmed to begin at 11:00 P.M. and end at 6:00 A.M.

**Then** Crown Jewel will activate the Do Not Disturb feature at 11:00 P.M. on July 4th and deactivate the feature at 6:00 A.M.

**Holiday Schedule:** The Crown Jewel will activate the Do Not Disturb feature according to the times programmed in the “Holiday” day area on dates that are programmed as holidays.

**Example:** If January 1st is programmed as a holiday and it lands on a Saturday, **and** you have the Holiday option for Saturdays set to “Holiday Schedule”, **and** you have the Do Not Disturb schedule for Holidays programmed to activate at 8:00 P.M. and deactivate at 11:00 A.M.

**Then** the Crown Jewel will automatically activate the Do Not Disturb feature at 8:00 P.M. and deactivate it at 11:00 A.M.

9. Click **OK**.
10. After programming all of your Do Not Disturb schedules, click **Done**.

### Editing a Do Not Disturb Schedule

1. **Open** the unit file (refer to page 8 for details).
2. From the Main Menu, click the **Do Not Disturb** button in the Edit box. The Do Not Disturb screen will appear (see Figure 11 on page 24).
3. Click the **Edit Schedule** button. The Feature Schedule screen will appear (see Figure 12 on page 24).
4. Click in the area of the schedule you wish to edit. Type in the new entry. Be sure that the time is entered in 24-hour format (HH:MM).
5. After completing all of your changes, click **Done**. CJWin will return you to the Do Not Disturb screen.
6. Click **Done**.

# OTHER SCHEDULES

## Erasing a Do Not Disturb Schedule

1. **Open** the unit file (refer to page 8 for details).
2. From the Main Menu, click the **Do Not Disturb** button in the Edit box. The Do Not Disturb screen will appear (see Figure 11 on page 24).
3. Click the **Edit Schedule** button. The Feature Schedule screen will appear (see Figure 12 on page 24).
4. Select the **From** box for the schedule you wish to erase. Press the DELETE key until the entire box has been erased.
5. Press the TAB key and the entire schedule for that day will be erased.
6. After completing all of your changes, click **Done**. CJWin will return you to the Do Not Disturb screen.
7. Click **Done**.

## About Unlock Schedules

The Crown Jewel can automatically open any gate and close it later that day. This feature is known as the Unlock Schedules feature. Each day of the week can have up to 2 time segments. In addition, on programmed holidays, the schedule can automatically be ignored or changed to an alternate programmed schedule reserved for holidays.

**IMPORTANT NOTE:** Before using the Unlock Schedule feature, set the Crown Jewel's date and time (see page 8).

## Main Gate Unlock Schedule

The Unlock Schedule for the Main Gate allows you to automatically activate and deactivate Relay 1 at times you specify. Once you set up a schedule for the Main Gate, CJWin will display the schedule on the chart located at the top of the screen. The schedule will be shown on the chart as a red bar between the times it will be activated.

1. **Open** the unit file (refer to page 8 for details).
2. From the Main Menu, click the **Main Schedule** button in the Edit box. The Automatic Unlock Schedule screen will appear (see Figure 14).
3. Select the **Unlock** box for the day you wish to program. Enter the time (in 24 hour format) when the main gate relay will **activate**.
4. Select the **Relock** box for the same day you programmed in step 1. Enter the time (in 24 hour format) when the main gate will **deactivate**.

**Automatic Unlock Schedule**

Day	0	1	2	3	4	5	6	7	8	9	10	11	12	13	14	15	16	17	18	19	20	21	22	23	24
SUN																									
MON																									
TUE																									
WED																									
THU																									
FRI																									
SAT																									
HOL																									

Main Gate Schedule					
Day	Unlock	Relock	Unlock	Relock	On Holidays Use
Sunday					no schedule
Monday	08:00	17:00			no schedule
Tuesday	08:00	17:00			no schedule
Wednesday	08:00	17:00			no schedule
Thursday	08:00	17:00			no schedule
Friday	08:00	17:00			no schedule
Saturday					no schedule
Holidays					

Done

Enter 24 hour time as hh:mm tab to next column

Figure 14: Automatic Unlock Schedule Screen

## OTHER SCHEDULES

### Main Gate Unlock Schedule (continued)

- To set up more automatic unlock schedules for the main gate on that day, repeat steps 3 and 4 in the second Unlock and Relock boxes.
- Click in the “On Holidays Use” box. Click the link button. The “Holiday Options” screen will appear (refer to Figure 13 on page 25).
- Select one of the following:

**No Schedule:** The Crown Jewel will not activate the Automatic Unlock Schedule for Relay 1 on days that are programmed as holidays.

**Today's Schedule:** The Crown Jewel will treat holidays in the same manner as a “regular” day.

**Example:** If July 4th is programmed as a holiday and it lands on a Wednesday, **and** You have the Holiday option for Wednesdays set to “Today's Schedule”, **and** You have the Main Unlock Schedule for Wednesdays programmed to begin at 11:00 A.M. and end at 6:00 P.M.

**Then** Crown Jewel will activate Relay 1 at 11:00 A.M. on July 4th and deactivate the relay at 6:00 P.M.

**Holiday Schedule:** The Crown Jewel will activate the Main Unlock Schedule according to the times programmed in the “Holiday” day area on dates that are programmed as holidays.

**Example:** If January 1st is programmed as a holiday and it lands on a Saturday, **and** you have the Holiday option for Saturdays set to “Holiday Schedule”, **and** you have the Main Unlock Schedule for Holidays programmed to activate at 8:00 A.M. and deactivate at 11:00 A.M.

**Then** the Crown Jewel will automatically activate Relay 1 at 8:00 A.M. and deactivate it at 11:00 A.M.

- Click **OK**.
- After programming all of your Automatic Unlock Schedules, click **Done**.

### Auxiliary Relay Unlock Schedule

The Unlock Schedule for the auxiliary relay allows you to automatically activate and deactivate the device attached to Relay 2 at times you specify.

- Open** the unit file (refer to page 8 for details).
- From the Main Menu, click the **Aux Schedule** button in the Edit box. The Automatic Unlock Schedule screen will appear (refer to Figure 14 on page 26).
- Select the **Unlock** box for the day you wish to program. Enter the time (in 24 hour format) when the auxiliary relay will activate.
- Select the **Relock** box for the same day you programmed in step 1. Enter the time (in 24 hour format) when the auxiliary relay will deactivate.
- To set up more automatic unlock schedules for the auxiliary relay on that day, repeat steps 3 and 4 in the second **Unlock** and **Relock** boxes.
- Click in the “On Holidays Use” box. Click the link button. The “Holiday Options” screen will appear (refer to Figure 13 on page 25).
- Select one of the following:

**No Schedule:** On holidays, the Crown Jewel will not unlock or re-lock Relay 2.

**Today's Schedule:** The Crown Jewel will treat holidays as “regular” days.

**Example:** If July 4th is programmed as a holiday and it lands on a Wednesday, **and** You have the Holiday option for Wednesdays set to “Today's Schedule”, **and** You have the Auxiliary Schedule for Wednesdays programmed to begin at 11:00 A.M. and end at 6:00 P.M.

**Then** Crown Jewel will activate Relay 2 at 11:00 A.M. on July 4th and deactivate the relay at 6:00 P.M.

**Holiday Schedule:** The Crown Jewel will activate the Auxiliary Schedule according to the times programmed in the “Holiday” day area on dates that are programmed as holidays.

**Example:** If January 1st is programmed as a holiday and it lands on a Saturday, **and** you have the Holiday option for Saturdays set to “Holiday Schedule”, **and** you have the Auxiliary Schedule for Holidays programmed to activate at 8:00 A.M. and deactivate at 11:00 A.M.

**Then** the Crown Jewel will automatically activate Relay 2 at 8:00 A.M. and deactivate it at 11:00 A.M.

- Click **OK**.
- After programming all of your Automatic Unlock Schedules, click **Done**.



# ENTRY CODES

## Adding Entry Codes

1. **Open** the unit file (refer to page 8 for details).
2. From the Main Menu, click the **Entry Codes** button in the Edit box. The Edit Entry Codes screen will appear (see Figure 15).
3. In the **Code** box, enter a (4) four-digit entry code (0000 to 9999). *Two records cannot share the same code.*
4. Select the **Action** that this code, when entered at a unit, will prompt:
  - **Cycle Default:** The Crown Jewel will activate the default relay (Keypad 1 will open Relay 1, Keypad 2 will open Relay 2) for its programmed activation time.
  - **Cycle Main:** The Crown Jewel will activate Relay 1 for the relay's programmed open time.
  - **Cycle Aux:** The Crown Jewel will activate Relay 2 for the relay's programmed open time.
  - **Latch Main:** The Crown Jewel will activate Relay 1 until it is released by an entry code that has its action programmed as either "Release Main" or "Release Both".
  - **Latch Aux:** The Crown Jewel will activate Relay 2 until it is released by a code that has its action programmed as either "Release Aux" or "Release Both".
  - **Release Main:** The Crown Jewel will deactivate Relay 1. Therefore, if the gate attached to Relay 1 was previously latched open, then an entry code programmed as "Release Main" will close that gate.
  - **Release Aux:** The Crown Jewel will deactivate Relay 2. Therefore, if the gate attached to Relay 2 was previously latched open, then an entry code programmed as "Release Aux" will close that gate.
  - **Release Both:** The Crown Jewel will deactivate Relays 1 and 2. Therefore, if the gates attached to Relays 1 and 2 were previously latched open, then an entry code programmed as "Release Both" will close both gates.
5. At the **Zone** box, assign a Time Zone (0 to 7) when the code will be valid (see Time Zones for more information).  
0 = Allows access all day, any day.
6. Enter the **Name** associated with the entry code. *Assigning a name to an entry code allows you to easily locate transactions that have occurred for that code. This entry can be up to 31 characters in length and can include all letters, numbers, and punctuation marks.*
7. Click **Save**.
8. After adding all your entry codes, click **Done**.

## Editing Entry Codes

1. **Open** the unit file (refer to page 8 for details).
2. From the Main Menu, click the **Entry Codes** button in the Edit box. The Edit Entry Codes screen will appear (see Figure 15 on page 28).
3. Click to highlight the record you want to edit.
4. Make any necessary edits in the boxes at the top of the screen.
5. Click **Save**.

## Erasing Entry Codes

1. **Open** the unit file (refer to page 8 for details).
2. From the Main Menu, click the **Entry Codes** button in the Edit box. The Edit Entry Codes screen will appear (see Figure 15 on page 28).
3. Click to highlight the record you want to delete.
4. Click **Erase**.
5. Click **Save**.

# CALL FORWARDING

This section will cover . . .

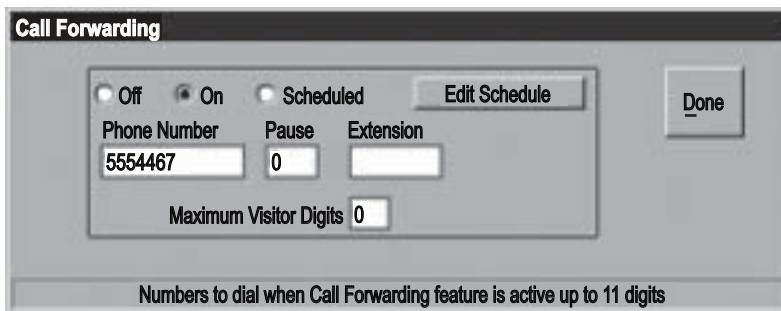
- [About Call Forwarding](#) Page 30
- [Enabling Call Forwarding](#) Page 30
- [Setting Up a Call Forwarding Schedule](#) Page 31

## About Call Forwarding

The Call Forwarding feature allows you to program your Crown Jewel unit to call an outside telephone number when a visitor calls the main residence (by pressing the “#” key on the front panel of the unit). This feature enables you to allow access to a visitor from a remote location.

The Call Forwarding Number can be:

- A phone number of up to 12 digits
- Scheduled Call Forwarding



The screenshot shows a 'Call Forwarding' screen with the following elements:

- Three radio buttons: 'Off' (unselected), 'On' (selected), and 'Scheduled' (unselected).
- An 'Edit Schedule' button next to the 'Scheduled' option.
- A 'Done' button on the right side.
- Three input fields: 'Phone Number' containing '5554467', 'Pause' containing '0', and 'Extension' (empty).
- A 'Maximum Visitor Digits' field containing '0'.
- A footer note: 'Numbers to dial when Call Forwarding feature is active up to 11 digits'.

Figure 16: Call Forwarding Screen

## Enabling Call Forwarding

1. **Open** the unit file (refer to page 8 for details).
2. From the Main Menu, click the **Call Forwarding** button in the Edit box. The Call Forwarding screen will appear (see Figure 16).
3. At the Call Forwarding screen, select **On**.
4. Enter the **Phone Number**. *Visitor calls will be forwarded to this number.*
5. If the phone number has an **Extension**, enter the number (up to 6 digits) and the **Pause** time (in seconds). When the unit calls the phone number, it will pause the defined number of seconds before dialing the extension.  
**Maximum Visitor Digits:** This area allows you to set the maximum number of digits that a visitor may dial on the unit's keypad after a visitor call has been answered. This entry can be between 0 to 6 digits.
6. Click **Done**.

# CALL FORWARDING

## Setting Up a Call Forwarding Schedule

A Call Forwarding Schedule allows you to set a time period during which calls will be forwarded to the main residence. All calls that occur outside the schedule will not be forwarded.

**NOTE:** This feature applies only to calls made to the main residence phone, not to other tenants via Dialing Codes.

1. **Open** the unit file (refer to page 8 for details).
2. From the Main Menu, click the **Call Forwarding** button in the Edit box. The Call Forwarding screen will appear (see Figure 16 on page 30).
3. At the Call Forwarding screen, select the **Scheduled** radio button.
4. Click **Edit Schedule**. The Feature Schedule screen will appear (Figure 17).

The screenshot shows the 'Feature Schedule' screen. At the top, there is a grid for scheduling. The days of the week (SUN to HOL) are listed on the left, and the hours of the day (0 to 24) are listed at the bottom. Below the grid is a 'Do-Not-Disturb Schedule' table with columns for Day, From, Until, and On Holidays Use. A 'Done' button is located to the right of the table. At the bottom of the screen, there is a note: 'Enter 24 hour time as hh:mm, tab to next column'.

Do-Not-Disturb Schedule			
Day	From	Until	On Holidays Use
Sunday	00:00	23:59	Holiday Schedule
Monday			no schedule
Tuesday	20:00	06:00	no schedule
Wednesday	20:00	06:00	no schedule
Thursday	20:00	06:00	no schedule
Friday	20:00	06:00	no schedule
Saturday	00:00	23:59	no schedule
Holidays	00:00	23:59	

**Figure 17: Feature Schedule Screen**

5. Select the **From** box for the day you wish to program. Enter the time (in 24 hour format) when visitor calls will begin being forwarded.
 

**Example:** For visitor calls to be automatically forwarded at 8:30 A.M. on Mondays, enter "0830" in the **From** box for Mondays.
6. Select the **Until** box for the same day. Enter the time (in 24 hour format) when visitor calls will be directed back to the residence.
7. Select the "On Holidays Use" box for the day you are programming. Click the link button. The "Holiday Options" screen will appear (refer to Figure 13 on page 22).
8. Select one of the following:

**No Schedule:** The Crown Jewel will not activate the Call Forwarding feature on days that are programmed as holidays.

**Today's Schedule:** The Crown Jewel will treat holidays as "regular" days.

**Example:** If July 4th is programmed as a holiday and it lands on a Wednesday, **and** You have the Holiday option for Wednesdays set to "Today's Schedule", **and** You have the Call Forwarding Schedule for Wednesdays programmed to begin at 8:00 A.M. and end at 6:00 P.M.

**Then** Crown Jewel will activate the Call Forwarding feature at 8:00 A.M. on July 4th and deactivate the feature at 6:00 P.M.

**Holiday Schedule:** The Crown Jewel will activate the Call Forwarding feature according to the times programmed in the Holiday schedule.

**Example:** If January 1st is programmed as a holiday and it lands on a Saturday, **and** you have the Holiday option for Saturdays set to "Holiday Schedule", **and** You have the Call Forwarding Schedule for Holidays programmed to activate at 8:00 A.M. and deactivate at 12:00 P.M.

**Then** the Crown Jewel will automatically activate the Call Forwarding feature at 8:00 A.M. and deactivate it at 12:00 P.M.

9. After completing all of your Forwarding Schedules, click **Done**.

# UNIT TRANSACTIONS

This section will cover . . .

- [About Unit Transactions](#) Page 32
- [Retrieving Unit Transactions](#) Page 32
- [Viewing and Erasing Transactions](#) Page 32

## About Unit Transactions

CJWin allows you to retrieve, view, edit, print, and analyze your Crown Jewel's transactions.

Transactions are records that the Crown Jewel makes each time an action is performed by the system. These records contain information such as the date and time an action has taken place, what keypad the action took place at, the type of action that was performed, and the action that was taken by the system. The Crown Jewel will then store these records in its memory until you retrieve them with the use of the CJWin program.

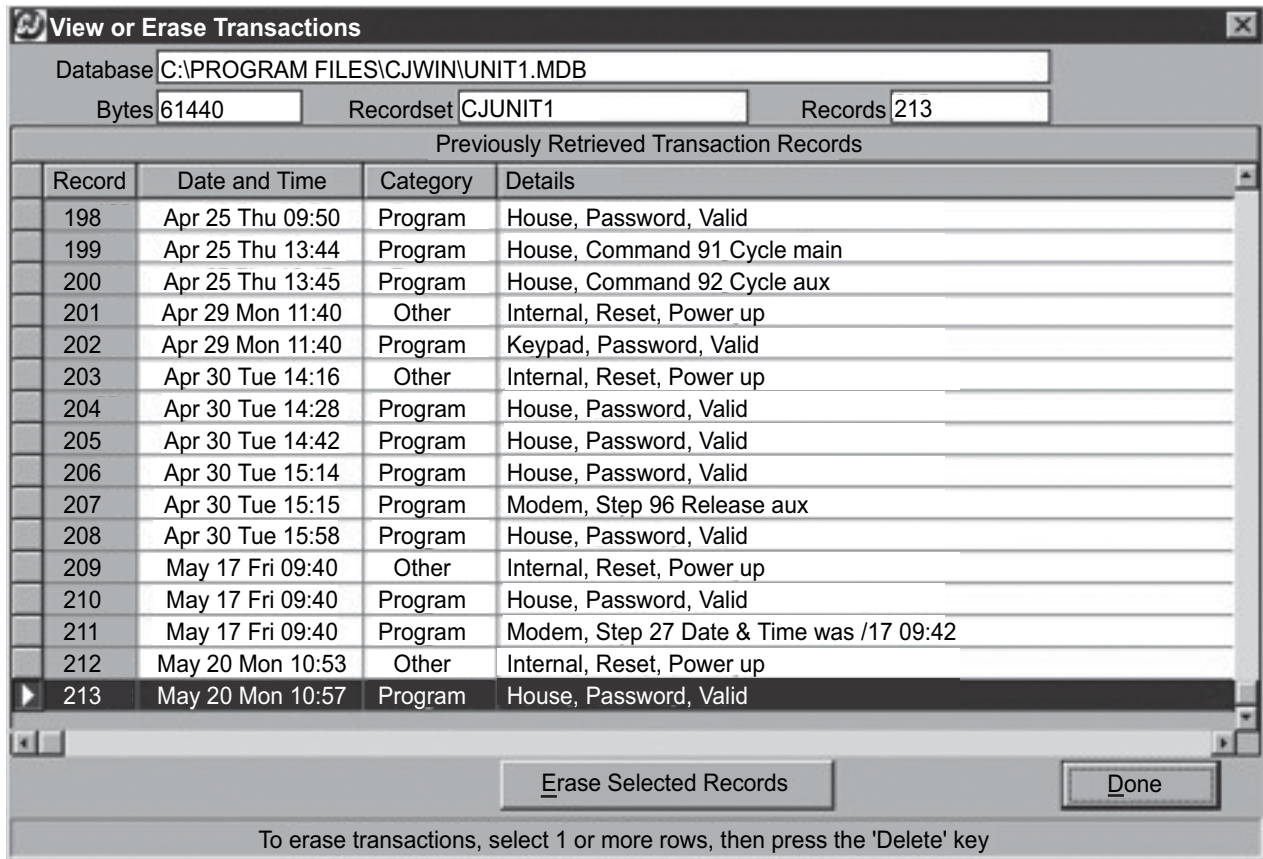


Figure 18: View or Erase Transactions Screen

## Retrieving Unit Transactions

Before you can view, edit or analyze your Crown Jewel unit's transactions, you will need to retrieve these transactions from the unit's memory.

1. **Open** the unit file (refer to page 8 for details).
2. **Connect** to the unit (see page 11 for details).
3. When CJWin is connected to the unit, click **Transactions**.  
CJWin will begin retrieving the transactions from your unit's memory. Once retrieved, the transactions will be displayed in the box located at the bottom of the screen, beginning with the oldest transaction.
4. When CJWin is finished receiving transactions, click **Disconnect**.
5. Once CJWin has disconnected from the unit, click **Done**.

**NOTE:** To print transactions, refer to page 35.

## Viewing and Erasing Transactions

1. Retrieve the transactions from the unit (see above).
2. From the Main Menu, click the Transactions button in the View area. The View or Erase Transactions screen will appear (Figure 18).
3. **To Erase a transaction:** Click to highlight the transaction you wish to erase. Press the DELETE key; or click the **Erase Selected Records** button.  
At the confirmation dialog box, click **OK**.
4. When finished, click **Done**.

**NOTE:** To print transactions, refer to page 35.

# USING THE CONTROL PANEL

This section will cover . . .

- [Accessing the Control Panel](#) Page 33
- [Main Gate Commands](#) Page 34
- [Auxiliary Relay Commands](#) Page 34
- [Special Control Panel Commands](#) Page 34

## Accessing the Control Panel

The Control Panel allows you to open a relay, activate the Do Not Disturb Until feature, change the system's programming password, and reset the unit.

1. Open the unit file (refer to page 8 for details).
2. Connect to the unit (see page 11 for details).
3. Once the CJWin is connected with the unit, click Control Panel. The Crown Jewel Unit Immediate Control screen will appear (Figure 19).

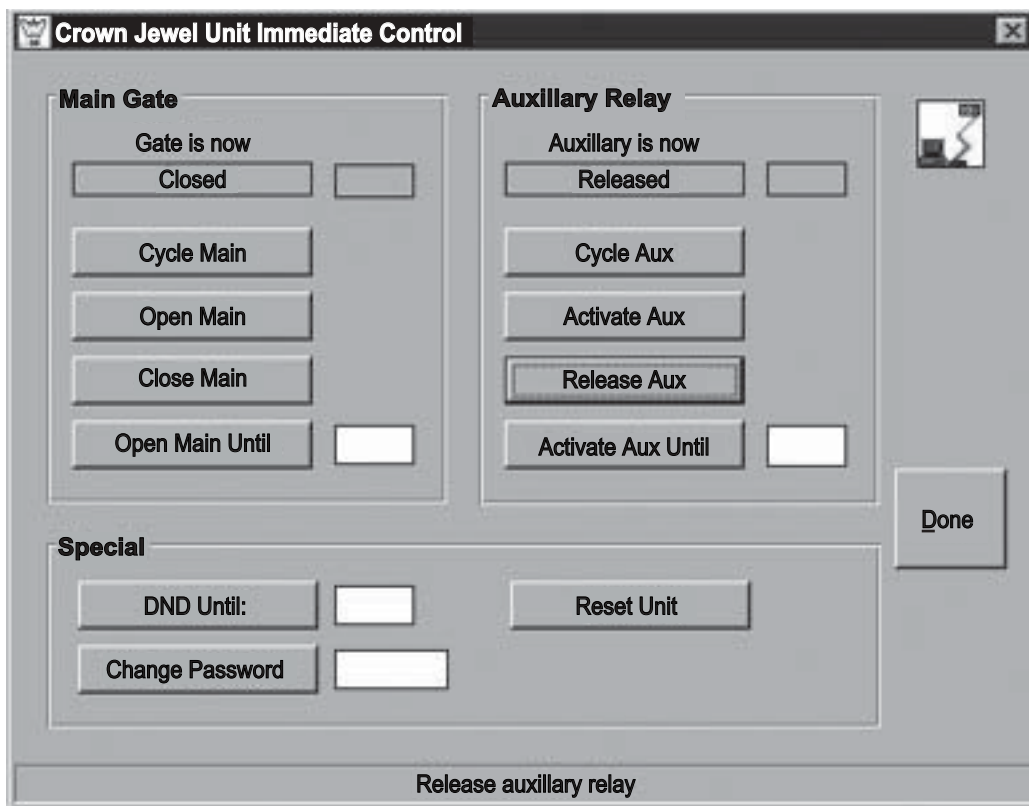


Figure 19: Crown Jewel Unit Immediate Control Screen

# USING THE CONTROL PANEL

## Main Gate Commands

**Gate Is Now:** This area describes the gate's current status.

**Cycle Main:** The Cycle Main button allows you to activate the main gate for the amount of time that was programmed in the Relay Activation Time setup area (refer to page 19).

**Open Main:** The Open Main button allows you to open the main gate until you release it by selecting the Close Main button.

**Close Main:** The Close Main button allows you to release the main gate from its open status. The gate may have been activated by either an entry code, a visitor call, the Open Main Until feature, the Open Main feature, or the Main Unlock Schedule feature.

**Open Main Until:** The Open Main Until button allows you to activate the main gate until the time of the day that you specify.

To set the Open Main Until feature:

1. In the box next to the Open Main Until button, enter the time (in 24 hour format) when the main gate will close.

**Example:** To close the gate at 5:00 A.M., enter "0500". To close the gate at 5:00 P.M., enter "1700".

2. Click **Open Main Until**. *The main gate will open and remain open until the time you programmed.*

## Auxiliary Relay Commands

**Auxiliary Is Now:** This area describes the auxiliary relay's current status.

**Cycle Aux:** The Cycle Aux button allows you to activate the auxiliary relay for the amount of time that was programmed in the Relay Activation Time setup area (refer to page 19).

**Activate Aux:** The Activate Aux button allows you to open the auxiliary relay until you release it by clicking the Release Aux button.

**Release Aux:** The Release Aux button allows you to release the auxiliary relay from its activated status. The relay may have been activated by an entry code, a visitor call, the Activate Aux Until feature, the Activate Aux feature, or the Auxiliary Unlock Schedule feature.

**Activate Aux Until:** The Activate Aux Until area allows you to activate the auxiliary relay until the time you specify.

To set the Activate Aux Until feature:

1. In the box next to the Activate Aux Until button, enter the time (in 24 hour format) when the auxiliary relay will deactivate.

**Example:** To close the relay at 5:00 A.M., enter "0500". However, to close the relay at 5:00 PM, enter "1700".

2. Click **Open Aux Until**. *The auxiliary relay will activate and remain activated until the time you programmed.*

## Special Control Panel Commands

**Do Not Disturb Until (DND Until):** The DND Until feature allows you to activate the Do Not Disturb feature until a time that you specify. Please note, this feature will temporarily override any Do Not Disturb Schedule that may have been previously programmed into the unit. For more details about Do Not Disturb Schedules, refer to page 24.

To set the DND Until feature:

1. In the box next to the DND Until button, enter the time (in 24 hour format) when the DND Until feature will end.

**Example:** To end the feature at 5:00 A.M., enter "0500". However, to end the feature at 5:00 P.M., enter "1700".

2. Click **DND Until**.

**NOTE:** *To end the DND Until feature prior to the time that you programmed, repeat steps 1 & 2 and enter "99" as the ending time.*

**Change Password:** This button enables you to change the unit's password.

To change the password:

1. In the box next to the Change Password button, enter the new (6) six-digit password.

2. Click **Change Password**.

CJWin will send the new password to the unit and also change the password areas in the Communicate screen and the Phone Number and Password screen.

**NOTE:** *If you must reset the unit contact your installing dealer. This may be an indication of a larger problem with the system or installation.*

**Reset Unit:** The Reset Unit feature allows you to reset the unit without having to disconnect the power to the unit.

# PRINTING

This section will cover . . .

- [Printing Transactions](#) Page 35
- [Printing the Unit's Current Information](#) Page 36

## Printing Transactions

For all other information about transactions, refer to page 32.

### ACCESSING THE REPORT SETUP SCREEN

1. Open the unit file (refer to page 8 for details).
2. Retrieve the transactions from the unit if you haven't done so already (refer to page 32 for details).
3. From the Main Menu, click the Transactions button in the Print area. The Transaction Report Setup screen will appear (see Figure 20).

	Record	Time Stamp	Details
First	1	4/3/02 1:21:00 PM	Modem, Step 14 Call Forwarding number 166122...
Last	213	5/20/02 10:57:00 AM	House, Password, Valid

Figure 20: Transaction Report Setup Screen

# PRINTING

## Printing Transactions (continued)

### CONFIGURING THE REPORT OPTIONS

**Range of Records to Print:** The range of transactions that are currently located in CJWin's memory are displayed in the two boxes at the bottom of the Range of Records to Print area.

1. To begin the printed list of transactions with a transaction other than 1, click **UP 1** or **UP 10** until the desired transaction is located in the starting transaction box.
2. To end the printed list of transaction with a transaction other than the last record stored in CJWin's memory, click **Down 1** or **Down 10** until the desired transaction is located in the ending transaction box.

**Categories:** A transaction record can be generated by one of three actions: an entry code, a visitor call, or a programming step. CJWin has the ability to filter and print the transactions according to these actions.

To filter the transactions, click to select the filter(s) from the Categories area.

**Optional Columns:** A normal transaction printout includes the following columns: Time and Date the transactions have occurred; the details of what generated the transaction; and the details of what actions the system took.

To include the record number and/or the category on the transaction printout, select **Record Number** and/or **Category** from the **Optional Columns** area.

**Margins:** This area allows you to configure the Top and Left margins of the report.

**Font:** Transactions are printed using a size 10 Sans Serif font. If you wish to change the font, the font size, or the font style to a setting that is available on your computer, click the **Font** button. The Font Selection Screen is the same as the default Windows font screen.

**Print:** When all report options are configured, click **Print**.

## Printing the Unit's Current Information

CJWin allows you to print your unit's current configurations onto your computer's local printer.

1. **Open** the unit file (refer to page 8 for details).
2. From the Main Menu, click the **Unit Information** button in the Print area. The Unit Information Report Setup screen will appear (see Figure 21).

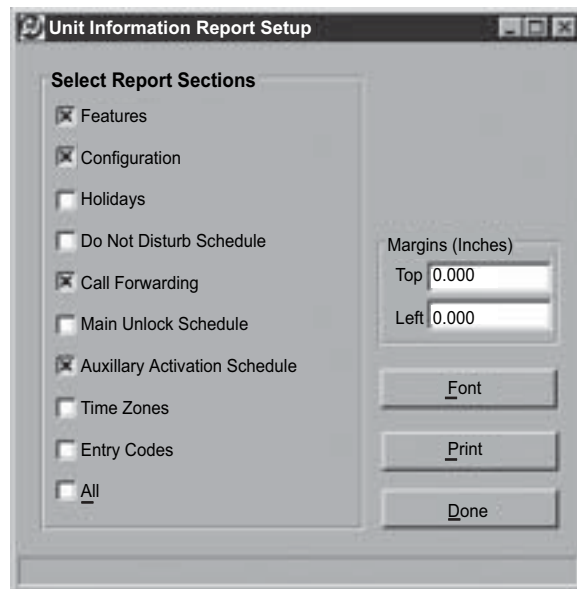


Figure 21: Unit Information Report Setup

3. **Select Report Sections:** Click to select the feature(s) that will be included in the report.
4. To change the type and size of font that is used in the printout, click the **Font** button. The Font Selection Screen will appear. The Font Selection Screen is the same as the default Windows font screen.
5. Once you have set up the printout information, click **Print**. CJWin will then print the unit's information to your computer's local printer.
6. After completing all of your entries in this area, click **Done**.









Copyright© 2005, All Rights Reserved

This document is protected by copyright and may not be copied or adapted without the prior written consent of Sentex Systems. This documentation contains information proprietary to Sentex and such information may not be distributed without the prior written consent of Sentex. The software and firmware included in the Sentex product as they relate to this documentation are also protected by copyright and contain information proprietary to Sentex.

**FOR TECHNICAL SUPPORT, PLEASE CONTACT YOUR LOCAL SENTEX SYSTEMS DEALER**